



www.mangotsfieldschool.
org.uk

Special points of
interest:

[Tell them what you
think!](#)

South Glos Library
Services want to know
what you think about
their public libraries –
what you think should
be different, what else
you'd like them to do?
If you're under 16, fill
in a survey form at
your local library
during the week
beginning 22nd
November.

Inside this issue:

PTA Quiz Form	2
Jumpers update	2
Student Achievements	2
Green Power team news	3
Science equipment wanted	3
Discounted Bus Pass	3
Free School Meals	3
Year 11 Catch up sessions	4

Issue: 5

Newsletter Date: 12 November 2010

Meningitis Symptoms

Meningitis and meningococcal septicaemia can strike with little or no warning, but knowing the symptoms and acting fast can save lives. Every week, six families lose a loved one to this devastating disease.

Below are the main symptoms which may be present with either disease. Some of the symptoms for meningitis and meningococcal septicaemia are the same, while others differ. It is important to remember **that not everyone gets all of these symptoms and they can appear in any order.** In the early stages of both diseases, symptoms can also often appear flu like.

If you think something is wrong, **GO IMMEDIATELY TO YOUR NEAREST GP OR CASUALTY UNIT - FOLLOW YOUR INSTINCTS AND ACT FAST.**

Meningitis

Classic symptoms:

- a headache
- stiff neck
- dislike of bright light

Other symptoms can include:

- difficulty supporting own weight
- fever
- vomiting and diarrhoea
- confusion and drowsiness

The symptoms of pneumococcal meningitis are the same as meningococcal meningitis.

Meningococcal Septicaemia

Common symptoms:

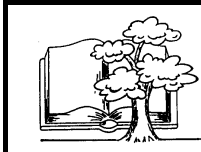
- aching limbs (particularly leg pain)
- cold hands and feet
- a rash which starts like pin prick spots
- and develops rapidly into purple bruising

Other symptoms may include:

- difficulty supporting own weight
- fever
- vomiting and diarrhoea
- confusion and drowsiness
- difficulty breathing
- change in skin colour



Important: Someone who becomes unwell rapidly should be examined particularly carefully for the meningococcal septicaemia rash. The majority of people (over 50%) with meningococcal septicaemia develop a rash of tiny 'pink prick' spots which can rapidly develop into purple bruising. To identify the rash, press a glass tumbler against it and, if the rash does not fade, it could be meningococcal septicaemia. On dark skin, check for the rash on lighter parts of the body, eg inner eyelids or finger tips.



**PARTNERSHIP
THROUGH
ACTION**

**Mangotsfield School
Parent Teacher Association**

PTA QUIZ — FRIDAY 19TH NOVEMBER AT 7.30 PM

<p>TEAM NAME:.....</p> <p>TEAM CAPTAIN:.....</p> <p>ADDRESS:.....</p> <p>.....</p> <p>.....</p> <p>.....</p> <p>TEL NO:</p>	<p>NAMES OF TEAM MEMBERS</p> <p>1.</p> <p>2.</p> <p>3.</p> <p>4.</p> <p>5.</p> <p>6.</p>
---	--

Please cut out the above form and return in an envelope to: MR A WAIT, MANGOTSFIELD SCHOOL BY WEDNESDAY 17TH NOVEMBER 2010 AT THE LATEST.

Please indicate the "Fee enclosed": £_____ (£3 per person)

School jumpers are now compulsory and must be worn in assemblies.

Student Achievements

Congratulations to Phoebe Scragg of 8.7 who passed her Grade 2 exam on the Viola, and to Ellie-Paige Evans of 8.7 who has won a place in the Gloucestershire Girls' Under 15 Rugby team. Well done to both students.

Mangotsfield's Green Power team MPH come 20th out of 73 in National Final Sunday 17th October 2010

Congratulations again to the MPH team who came 20th in the country in the Formula 24 final at Goodwood on Sunday 17th October. The winners were an all-girl team from Sandbach School with their car called Zebedee who clocked up 127.2 miles in the race. MPH managed 96 miles in the race so congratulations to David Baker, Mitchell Brain, Ben Goodman, Jordan Mould, Jack Williams, their parents and the staff who helped them to do so well.

Old household items wanted

The Science Department would welcome donations of:

- | | |
|--|------------------------------|
| • Knitting needles | Hairdryers |
| • Blenders | Kettles |
| • Lava Lamps | Strong ice-cream tubs |
| • Newton's cradles | Skateboards |
| • Pictures of animals (old calendars) | Nail Varnish |
| • Small paintbrushes | Wind-up toys |
| • Magnetic toys | Fishing line |
| • Geraniums | |
| • Absorbent materials such as towels, tea towels, T-shirts or sweat shirts to make cloths for wiping up spillages during lessons. | |



Please bring to the Science Prep Room. Your help would be much appreciated.

DISCOUNTED BUS PASS

The Youth Unltd card entitles you to half adult fares on any bus which starts or finishes in South Gloucestershire. You can travel after 6.00 pm on weekdays, all day at weekends and bank holidays, and all day during South Glos Council school holidays.

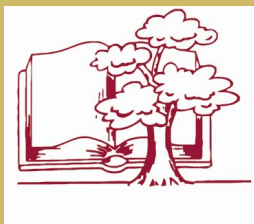
To qualify for the concessionary travel card you must meet all of the following criteria:

- **Aged 14-18 years old**
- **In full-time education**
- **Live in South Gloucestershire**

The application form is available online at www.southglos.gov.uk/youthunltd or copies can be obtained from the school reception office. Once completed, please return the application form to Reception.

Free School Meals

Thousands of parents are paying for school lunch or making sandwiches when they don't have to! This additional government support is a means of ensuring that families on lower income have their children's lunches paid for. To be eligible you need to show that you receive one of the following; **Income Support, Job Seekers Allowance, Child Tax Credit (annual income not exceeding £15,575), Support under part VI of the Immigration and Asylum Act 1999, Guaranteed Element of Pension Credit, Employment Support Allowance.** Forms are available from Reception.



**MANGOTSFIELD
SCHOOL
AN ENGINEERING AND
SCIENCE COLLEGE**

Please give any feedback or
articles for later editions to Ms
Terri Chard

Phone: 01454 862700
Fax: 01454 862700
E-mail: t.chard@
mangotsfieldschool.org.uk

We're on the Web

www.mangotsfieldschool.org.uk

**Many Year 10
and Year 11
students have
exams looming
— start your
revision NOW**

Timetable of Year 11 Catch Up Sessions

Day	After School
Monday Week A	Teacher Meetings
Tuesday Week A	Health and Social Care, Art and Photography, Electronics, Triple Science, Drama
Wednesday Week A	Art and Photography, Maths also A/A* Maths, Catering, RM, Electronics, ICT, History
Thursday Week A	Business, Electronics, ICT, German, BTech Science, A/A* Maths, French
Friday Week A	P.E.
Monday Week B	Teacher Meetings
Tuesday Week B	Health and Social Care, Main RM , Drama, Art and Photography, Electronics, Triple Science
Wednesday Week B	Art and Photography, Maths, also A/A* Maths, Catering, RM, Electronics, ICT, History
Thursday Week B	Business, Electronics, ICT, German, BTech Science, A/A* Maths, French
Friday Week B	P.E.

RM also available at lunchtimes, **English, Music**, some **Science** and **Geography** are organised by individual subject teachers. There is also a comprehensive catch up timetable for **Science Module** in Years 10 and 11 for October and November exams. **RS** sessions start in February.